



# GMT MONTHLY MEMBERSHIP PROGRESS REPORT

Results as of: 4/30/2017

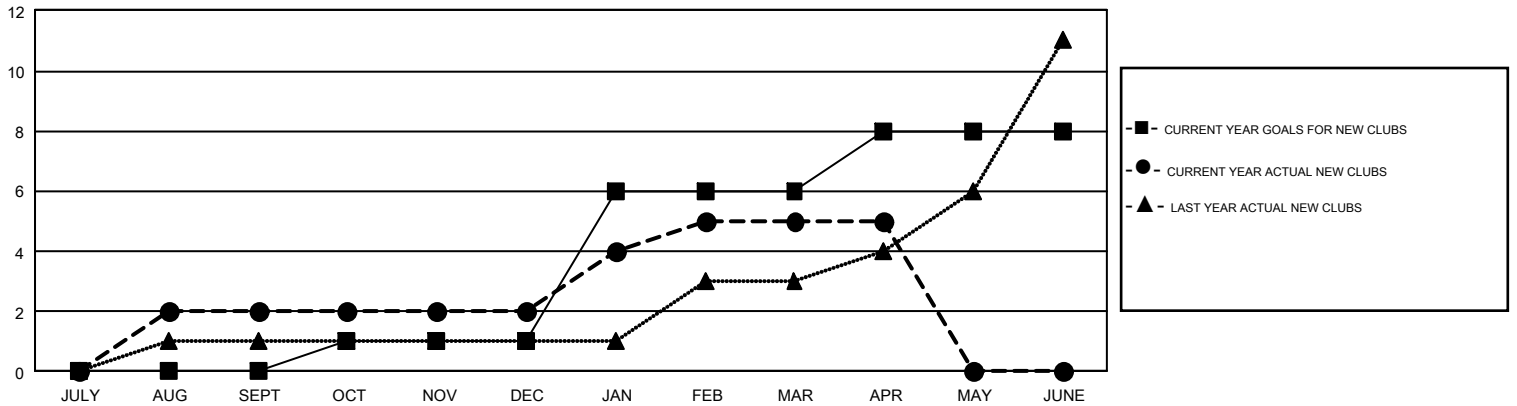
## GMT Constitutional Area 3, Group E

GMT: CARLOS ALMODOVAR

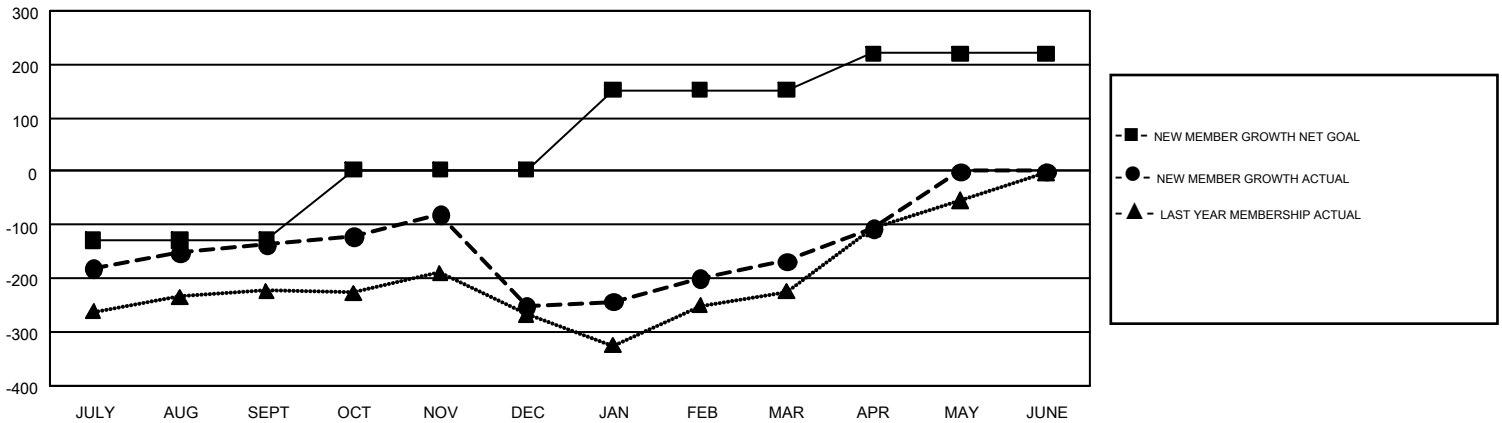
REPORT DOES NOT INCLUDE CLUBS IN UNDISTRICTED AREAS.

Clubs				Members			
RESULTS FOR 2016-2017				RESULTS FOR 2016-2017			
QUARTER	NEW CLUB GOAL	NEW CLUBS	DROPPED CLUBS	QUARTER	NEW MEMBER GROWTH NET GOAL (not reinstated or transfers)	NEW MEMBER GROWTH ACTUAL (not reinstated or transfers)	DROPPED MEMBERS ACTUAL (including transfers)
JULY/AUG/SEPT	0	2	1	JULY/AUG/SEPT	-128	201	339
OCT/NOV/DEC	1	0	7	OCT/NOV/DEC	131	208	322
JAN/FEB/MAR	5	3	3	JAN/FEB/MAR	149	282	197
APR/MAY/JUNE	2	0	0	APR/MAY/JUNE	68	96	36

GOALS AND ACTUAL NEW CLUBS CUMULATIVE



GOALS AND ACTUAL MEMBERS CUMULATIVE



DROPPED CLUBS: 11	164 CLUBS OF 286 ADDED 1 OR MORE NEW MEMBERS	<u>GENDER DISTRIBUTION</u>	
<u>DROPPED MEMBERS</u>		MALE	4,690 (56.78%)
DECEASED	<a href="#">CLICK HERE FOR CUMULATIVE MEMBERSHIP DATA</a>	FEMALE	3,570 (43.22%)
CLUB CANCELLED		TOTAL FAMILY UNIT MEMBERS	1,928
OTHER		FAMILY MEMBERS PAYING HALF DUES	1,079
TOTAL		893	